

NEURODEVELOPMENTAL SERVICE (NDS)

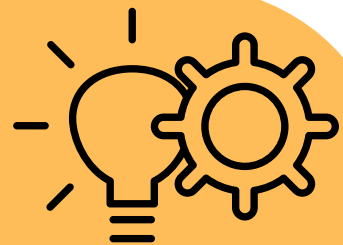
THROUGHOUT THIS PROCESS CYP AND THEIR FAMILIES SHOULD BE ABLE TO ACCESS THE RIGHT LEVEL OF SUPPORT AND COMMUNICATION AT THE RIGHT TIME

LOCAL OFFER OF SUPPORT

Discuss concerns or worries with a professional who knows the child or young person (CYP) well. You may require support from a specific service or team. Use the SEND Local Offer <https://sendlocaloffer.nelincs.gov.uk/> and Family Information Service <https://www.nelincs.gov.uk/children-families-and-schools/families-first-information-service/> to identify what is available.

PRE REFERRAL

Before making a referral a parent/carer or professional can call the NDS advice line if they wish to discuss any worries or concerns and see if a referral is needed at this time. Call on 01472 252570 option2.



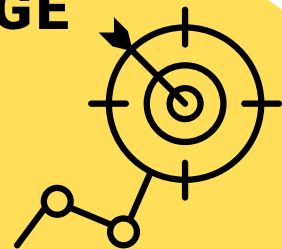
REFERRAL

Referral can be accessed at navigo.ymmneuro@nhs.net please complete and submit to Neurodevelopmental Service.



INITIAL SCREENING & TRIAGE

Referral screened by clinical expert to determine if a *specialist assessment is appropriate based on the referral form, without further information being obtained.



CLINICAL SCREENING

Where a CYP has more complex needs as described in the referral form, a clinical discussion will be held. Additional information will be requested from setting & parent/ carer (where appropriate).

Members of the clinical team may include Clinical Psychologist, Educational Psychologist, Paediatrician Psychiatrist, Speech and Language Therapist, Nurse (e.g. Learning Disability/ Children's. Early Help/ Social Care maybe represented where appropriate).

The clinical team will make recommendations for further support or *specialist assessment.



WHERE A *SPECIALIST ASSESSMENT IS REQUIRED

There are a range of assessments that a CYP and/or you as a parent/carer maybe asked to participate in. Not all assessments are required for every CYP or these may have been already conducted prior to this process.

- Developmental History
- School/ home observations
- Paediatric examination
- Speech and Language
- Autism Diagnostic Observation Schedule
- Autism Diagnostic Interview - Revised
- Cognitive assessment
- Others as needed



OUTCOME AND FEEDBACK AFTER A *SPECIALIST ASSESSMENT

- Parents invited to a feedback appointment
- Detailed report of assessment provided
- Recommendations for interventions and/ or further support
- Referrals for further assessment/ support for differential diagnosis outside of this pathway

