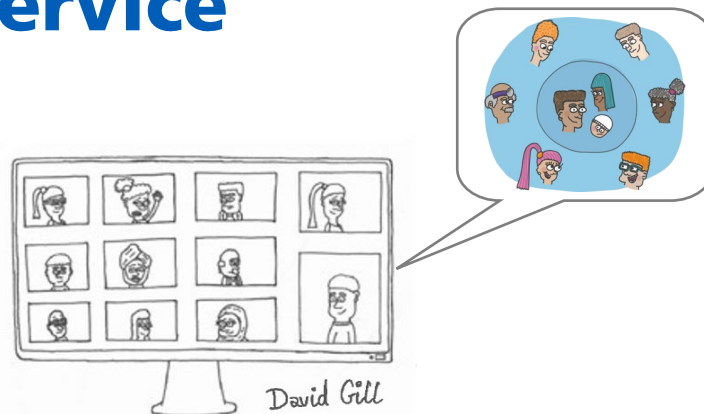


Humber and North Yorkshire Keyworker Service

Issue: 05 | May 2023



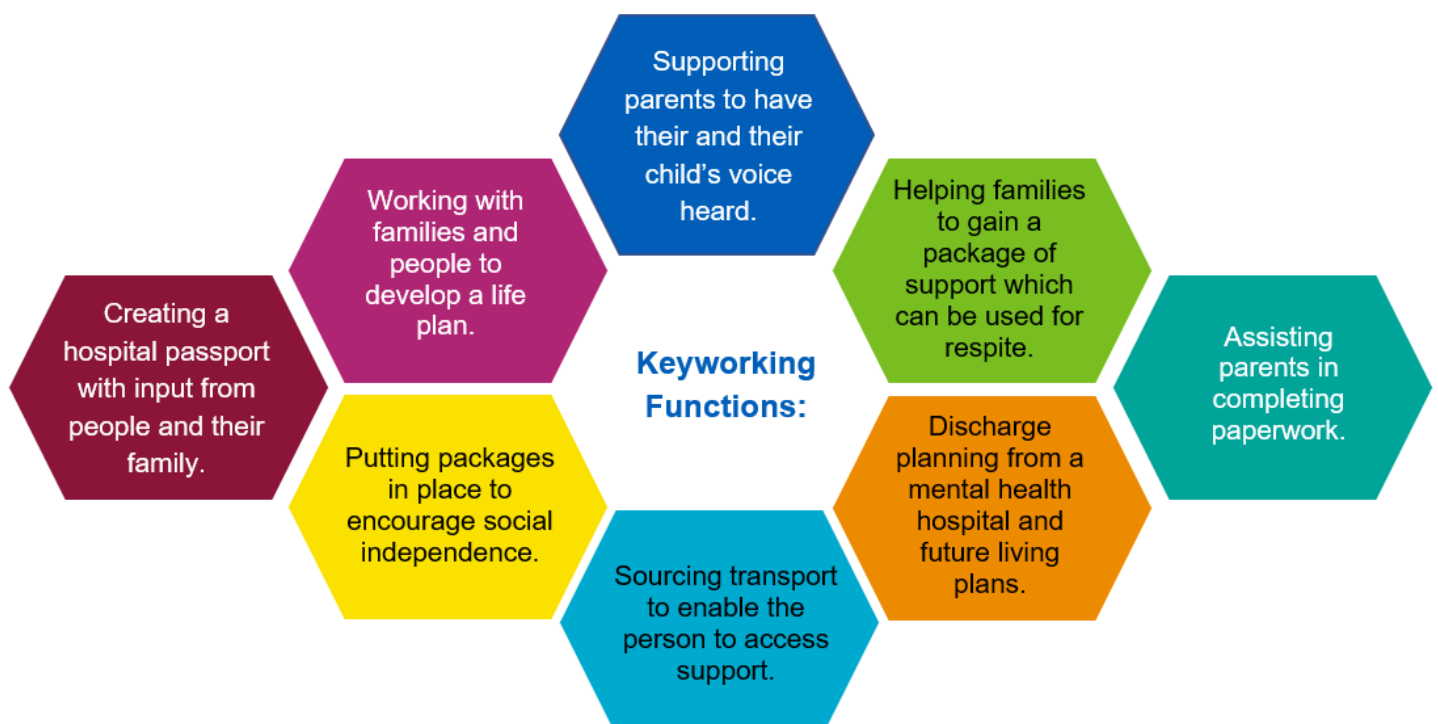
Newsletter for families and those working with families

Keyworker Service Update:

In the last quarter we continued to support more people and their families/carers. This included developing our offer to support those over 18 up to 25. We have presented to a number of professionals from adult services to inform them of our service and how to submit a referral.

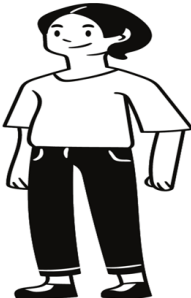
We have also continued to work towards the objective in the NHS Long Term Plan for Keyworker support to be extended to the most vulnerable children with a learning disability, autism or both, including those who face multiple vulnerabilities such as looked after, adopted children.

We are currently looking at the Keyworker journey so far and our Keyworkers have been developing Change Stories to help demonstrate what Keyworkers do. We have summarised some Keyworker contributions below.



Recruitment update:

We are excited to inform you we are expanding our team and are interviewing for the following roles:



Two Keyworkers to manage a caseload of people who have been identified as requiring a Keyworker, making sure people and families get the right support at the right time.

Two Senior Keyworkers bringing expertise and consultation into the Keyworking Service to ensure the Keyworker Function is embedded within local systems to meet people's needs in a joined-up way and whenever is possible in their communities.

A Personalisation Coordinator to work alongside the Keyworkers to consider how personalisation can be embedded in peoples care.

A Senior Administrator providing administrative support to the Keyworker Hub.



What is Personalisation?

When developing the service in our project group with people with lived experience parents and carers have told us that there is a lack of understanding regarding personalisation and the use of integrated personal budgets - this can result in frustration for people when they can see creative solutions that cannot be achieved due to funding.

The Humber and North Yorkshire Keyworker Service wanted to develop the Personalisation role based on those with lived experience. The personalisation role will ensure that people will have more choice in what happens and they are fully involved in the delivery of Keyworking. The Keyworker Service will aim to support the system through approaches to personalisation and personal budgets and the role of the Personalisation Coordinator has been developed to think more creatively to meet peoples needs.

If you would like to know more about Personalised Care please watch this [video](#).

Peer Leaders:

The Personalised Care Group at NHS England have developed an exciting online personal development programme called the Peer Leadership Development Programme. Personalised care represents a new relationship between people, professionals and the system. It happens when we make the most of the expertise, potential of people, families and communities. Anyone with experience of a mental and/or physical health condition, who is interested in learning how to work collaboratively with the NHS to improve care for all. The programme is completely free and delivered online.

Email england.pldp@nhs.net for a course booklet and more information on the Peer Leadership Development Programme.



Community of Experience Update



We are pleased to announce the Community of Experience has begun a staged launch and has continued to work with and recruit those with lived experience. The Community of Experience offers peer support, signposting and activities for people with a learning disability and autistic people up to the age of 25 and their parents or carers.

One person with lived experience involved in the project quoted:

“This project and opportunity has inspired me. I want to help and support others as I know the experience of being a parent of a child with additional needs is a hard one with many struggles along the way. I love the ethos behind the Healthy Parent Carer Programme and that it is delivered by Parent Carers too. The idea of a collaborative Parent Carer Community that supports other Parent Carers is something I wish I had back then.”

For more information about what the Community of Experience offers please contact The Community of Experience on:

E-mail: communityofexperience@kids.org.uk or via Telephone: 01482 467540



Do you know that we have a Facebook group for Parents and Carers?
To request to join please click [here](#).



The Humber and North Yorkshire Keyworker Service welcome The Family Ambassador to the team!



My name is Charlotte Piper and I am privileged to be part of the team, working in the role as Family Ambassador. I am excited to deliver this new and vital role to support parents and carers who find themselves in the difficult situation of having their child admitted into a mental health inpatient unit. I was that parent for 18 months and know what an extremely worrying, overwhelming and isolating time it can be.

I hope to be able to empower parents to have their voice heard as an equal partner in the decision making about their child's care and ensure that their unique perspective is listened to and included. I aim to offer support and encouragement of a positive future ahead for themselves and their child and for them to hold on to their hopes and dreams. I will offer practical help too such as signposting, sibling and family support and local area knowledge. I still work one day per week in my old job at a SEND school as learning support in a class of six children aged 11-15 years with autism and learning difficulties. We have a lot of fun together and I love still working hands on with the children. They are amazing and inspirational kids!

Outside of work I have three children aged 17, 15 and 8 years who are my best friends. We are a strong team and have a happy life which includes our two dogs Bruce and Cali. I enjoy swimming and open water swimming. I completed the Humber Swim last year and will be doing it again this summer and hopefully raise some money for Matthew's Hub, St Anne's School and the Humber Rescue. In a past life, I worked as a scuba diving instructor in Egypt, Europe and Central America.

For more information please contact your Family Ambassador on:



01482 205425



hnf-tr.familyambassadors@nhs.net



[Family Ambassadors \(humber.nhs.uk\)](http://FamilyAmbassadors(humber.nhs.uk))

QR Code for the
Humber and
North Yorkshire
Family Ambassador



The Humber and North Yorkshire Keyworker Service are working with Matthew's Hub to prepare for the extension of the Keyworker Service to autistic people and people with a learning disability aged 18-25!

The [Humber and North Yorkshire Keyworker Service](#) are extending their offer to include those transitioning between services, which includes those aged 18 up to the age of 25. The service has been operational since March 2022 and the initial focus was to offer Keyworker support to those aged up to 18. As the service has expanded its team, it is now planning on supporting those 18-25.

To help to prepare for this extension of the service, [Matthew's Hub](#), will work to understand the experiences of autistic people and people with a learning disability aged 18-25 years to understand what 'good support' looks like for this group and identify any gaps, themes and trends. They will use this valuable learning to support the evolving Humber and North Yorkshire Keyworker Service to develop this offer. This work will take place between May 2023 and March 2024.



Matthew's Hub are a valued partner of the Humber and North Yorkshire Keyworker Service and have been involved developing the service since the very beginning. They support autistic people aged 13 or over or those awaiting a diagnosis in Hull in East Riding. They have local links and networks across the Humber and North Yorkshire area and will utilise this to engage with Peer Led Groups, Advocacy Groups, Participation Forums and other relevant networks. Many of their staff are neurodivergent, autistic have ADHD and/or are dyslexic. Many staff also have lived experience as parents of neurodivergent people, many who are now adults. Matthew's Hub will work with voluntary and community group and harness their work experience and lived experience to engage with autistic people, people with a learning disability, their parents and carers.

The aim of this project is to enable the widest potential for innovation and successful implementation of the Humber and North Yorkshire Keyworker Service for those 18-25 years old.





Bringing Us Together are hosting Parent Led Advocacy Course for Family members living in Yorkshire and Humber.



[Humber Transforming Care Programme](#) has provided funding to [Bringing Us Together](#) to deliver a peer led advocacy course that the Humber and North Yorkshire Keyworker Service would like to share with you.

Bringing Us Together is delighted to be able to bring you a team of highly skilled and experienced trainers including family members and disabled people for a special six session course designed for Yorkshire and Humber families and parent carers.

5th June 2023 - 10.00am to 1.00pm

Getting to know one another. We are all trying to spin too many plates and have a lot we are juggling with. This workshop will give us an opportunity to share ways to deal with our stress and anxiety and to learn more about our triggers.

12th June 2023 - 10.00am to 1.00pm

Learn about the Social Model of disability and having a rights perspective on getting the best for our children. Children's Rights, Human Rights and sharing lived experience.

19th June 2023 10am to 1pm with 15 min break.

Learn more about the different types of advocacies and hear our stories of peer advocacy and what we mean by this. Understand about what makes us brave and individual leaders. The latest updates on national changes and reviews

26th June 2023 10.00am to 1.00pm

Meetings working together for the child/young person, types of meetings, cultural barriers, following up after the meeting. How to stay calm, in control and getting the best out of them with a focus on those children out of school.

3rd July 2023 10.00am to 1.00pm

Person Centred Planning. How to make it real. Starting to planning for housing. What you need to know to find the right housing and the right support for young disabled people and adults to have a great life.

10th July 2023 10.00am to 12.00pm

Kirsty Stuart from Irwin Mitchell will talk about deputyship. End of course and goodbyes from 12.30 to 1.30pm.

If you have an autistic child and/or a young person with a learning disability and would like more information on our welcoming, supportive and informative courses please email Katie@bringingustogether.org.uk

For more information or to book a place on the above courses please contact tony@bringingustogether.org.uk.

We recommend booking on all six courses and if you are unable to attend any we can send you the recording.



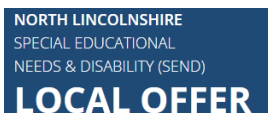
Families often miss information on services that can support them. Do you know about the Local Offer???

Families often miss information on services that can support them. Do you know about the local offer? The local offer shows families what they can expect from a range of local agencies including education, health and social care. The Local Offer gives people the information they need to make choices about services. For more information and to see your local area Local Offer Representative you can watch a video [here](#) or follow the links to your local Areas Local Offer



[Home | Hull SEND Local Offer \(mylocaloffer.org\)](http://mylocaloffer.org)

[Welcome \(eastridinglocaloffer.org.uk\)](http://eastridinglocaloffer.org.uk)



[SEND Local Offer | North Lincolnshire Special Educational Needs & Disability \(northlincs.gov.uk\)](http://northlincs.gov.uk)

[SEND Local Offer | North Yorkshire Council](#)



[NELC SEND Local Offer | Access Pathway \(nelincs.gov.uk\)](http://nelincs.gov.uk)

[Yorks Local Offer for SEND \(yor-ok.org.uk\)](http://yor-ok.org.uk)



Hello,

We're Mind, and we want to work with you to support young people in inpatient care for their mental health across England and Wales. We provide useful, engaging and informative printed resources for young people for **free**.



How can we help?

We've created 2 new booklets and a poster summarising young people's rights while they're in hospital as an informal patient or if they've been sectioned. The resources include: A booklet on being sectioned. A booklet on being an informal patient. An A2 poster.

The information in these resources has been produced alongside young people with experience of being inpatients for their mental health. You can access more information on these topics online at mind.org.uk/hospital. The resources are intended to complement rather than replace information that is already provided to inpatients.

"Neither me nor my parents understood that I was an "informal patient" on the first admission... Making the hospitalisation process clear and understandable at the outset is important" – young person."

Thank you for all the work you do to support young people.

Catherine, Evie and Alice at Mind

Mind, Young Peoples Information Team, 2 Redman Place, London, E20 1JQ
Contact: infor@mind.org.uk



Humber and North Yorkshire Keyworker Service

Opening hours Monday to Friday 9:00am - 5:00pm (excluding Bank Holidays)

Telephone: 01482 205425

Email: hnf-tr.keyworkerenquiries@nhs.net

Website: [Humber and North Yorkshire Keyworker Service](https://www.humber.nhs.uk/Services/humber-and-north-yorkshire-keyworker-service.htm)

(<https://www.humber.nhs.uk/Services/humber-and-north-yorkshire-keyworker-service.htm>)

Supporting people with a learning disability and autistic people to get the right care, at the right time, in the right place

More people cared for at home

Dynamic support registers (DSR)

- For adults, children and young people
- A tool used in a local area to identify people at risk or may become at risk of admission to a mental health hospital setting without specific and timely dynamic support.
- Each person is given a **RED**, **AMBER** or **GREEN** rating dependent on risk - or **BLUE**, a separate rating identifying those children, young people and adults currently in inpatient services.



Care (Education) and Treatment Review (CETR)

- For adults, children and young people
- A meeting to talk about people at risk of going into a mental health hospital and who are already in a mental health hospital.
- Make sure the person and their family are listened to.
- Makes a plan to support people to get the treatment they need.
- Each time a C(E)TR takes place, a review of the red, amber or green rating on the DSR takes place.
- A record of C(E)TR recommendations kept on the DSR record.
- The dynamic support risk stratification process should include a review of community C(E)TR recommendations and inpatient C(E)TR recommendations for people at risk of readmission.

Keyworkers make sure that children, young people and families get the right support at the right time and that local systems are responsive to fully meeting the young people's needs in a joined up way. More information about keyworkers can be found at www.england.nhs.uk/learning-disabilities/care/children-young-people/keyworkers

Immediate risk of person being admitted to a mental health hospital.

- A C(E)TR must take place
- Referral to the keyworker service for children and young people.

Immediate risk that the person will be admitted to a mental health hospital without urgent intervention.

- Multi-agency meeting and/or C(E)TR must take place
- Referral to the keyworker service for children and young people.

Some risks that could lead to the person being admitted or re-admitted to a mental health hospital; but currently these risks are being effectively managed.

- Clear identification of partners who would need to be involved in a C(E)TR if required.

A separate rating must identify children, young people and adults currently in mental health hospitals.

- Use to identify people needing commissioner oversight visits and inpatient C(E)TRs.

Less people in hospital

Humber and North Yorkshire Keyworker Service
Telephone: 01482 205425
Email: hnf-tr.keyworkerenquiries@nhs.net
Website: www.humberandnorthyorkshireservice.nhs.uk
Service

