

SPECIALIST ADVISORY SERVICE NEWSLETTER

Meet the team



Eleni Triantafyllou
Principal Educational
Psychologist



Paul Cook
Senior Early Years
Practitioner



Karen Cole
Specialist Advisory
Teacher
Cognition and Learning



Gareth Drakes
Inclusion Officer



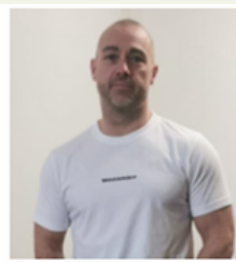
Claire Gordon
Specialist Advisory
Teacher
SEMH



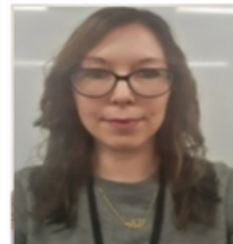
Rachel Barnes
Specialist Advisory
Teacher
Cognition and Learning



Jane Razagui
Specialist Advisory
Teacher
Communication and
Interaction



Glen Hostead
Assistant Educational
Psychologist



Jodie Marks
Assistant Educational
Psychologist



Rebecca Bevan
Trainee Educational
Psychologist



Lucy McLachlan
Inclusion Officer

Helena Wilkinson
Clerical Officer

Karen Hotson
Portage Early Years
Practitioner

Sheleen Spolton
Portage Early Years
Practitioner

Josephine Cooper
Admin Officer

Emma Riddle
Specialist Advisory
Teacher
Early Years

Claudia Dixon
Portage Early Years
Practitioner



Dr Louise Jarvis
Senior Educational
Psychologist



Sadia Anjum
Assistant Educational
Psychologist



Abigail Stevens
Assistant Educational
Psychologist



Teen Life programme



NELC autism professionals trained and licensed by The National Autistic Society have now been proudly facilitating the Teen Life programme for over 18 months, with many parents, carers, and professionals kindly sharing their individual experiences.



Teen Life is a free of charge six-session programme for parents and carers of young people with a diagnosis of autism aged 10-16.

Please contact EPtraining@nelincs.gov.uk to book onto the next series of Teen Life training commencing 23rd April 2023 and finishing on 25th May 2023.

Emotional Literacy Support Assistants (ELSA)

This September saw the Educational Psychology Service begin their third year of ELSA training. Our six meetings, held throughout the Autumn term, have supported the ELSA's to build on their knowledge and understanding of social and emotional needs. The training has given them the skills to plan and implement bespoke intervention and support programmes within their school.

If you would like any further information about our ELSA training, please contact: EPService@nelincs.gov.uk



Relational Approach

Following the success of the first series of Relational Approach training delivered through the Virtual School, we are pleased to offer another 3-day event during the Spring term; 28th February, 7th March, 14th March 2023. In addition to this, on 24th January and 31st January 2023, we will be holding a 3-hour event for senior leaders and managers. For further information, please contact: Abigail.Stevens@nelincs.gov.uk





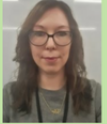
Emotionally-Based Barriers to School Attendance

This new project has delivered 6 webinars to school staff, and other colleagues who work with children and families such as Compass Go! and Families First Practitioners, to raise awareness about EBBSA and how NELC is supporting children, families and settings. The team have been collaborating with schools to provide ATTEND framework coaching and advice on how to embed an EBBSA support system. They have received many requests for support for individuals experiencing barriers and problems around attendance. These have come from families, schools, FFPs and Compass GO. For further information, please contact: EBBSA@nelincs.gov.uk.

EBBSA Support Team



Dr Louise Jarvis
Senior Educational Psychologist



Jodie Marks
Assistant Educational Psychologist



Lucy McLachlan
Inclusion Officer



Gareth Drakes
Inclusion Officer

EBBSA Support is a relational, holistic approach to proactively identify barriers to education and support successful engagement with learning.

SEMH Toolkit

We hope that you have all received information about our new, free, NELC Social, Emotional and Mental Health Graduated Response Toolkit (5 to 16 years).

The document provides information on:

- The Assess/Plan/Do/Review steps of the Graduated Response
- Guidance on effectively evidencing the operation of the Graduated Response
- A range of high-quality targeted specialist interventions
- Details of information about partner agencies

The toolkit can be found through the NELC Local Offer webpage.



Specialist Advisory Teacher Training Opportunities

New for Spring/Summer 2023:

Suite of SEND Training

- Intensive Interaction
- Teaching Reading to Learners with SEND
- High Quality Teaching for Primary and Secondary Learners with SEND
- Foetal Alcohol Spectrum Disorder- The Invisible Disability

Face to Face and Virtual sessions available- More information on dates and cost to follow

How To SENCo- Training for new, inexperienced & aspiring SENCos/refresher for SENCos

Half termly sessions on topics such as:

- Transition
- Assessment Tools
- Interventions
- Using TAs
- EHC Hub/EHCP requests/Annual Review
- Provision Maps/Pupil Passports
- Ofsted

If there are any topics you would like to see included, please contact your SAS teacher

More Information on dates/cost to follow

Happy holidays

We hope you all have a wonderful, restful holiday and we look forward to continuing our work with you in 2023!

