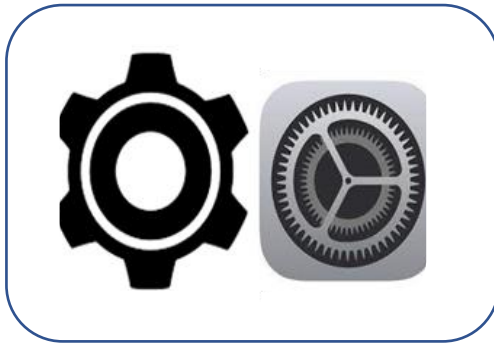
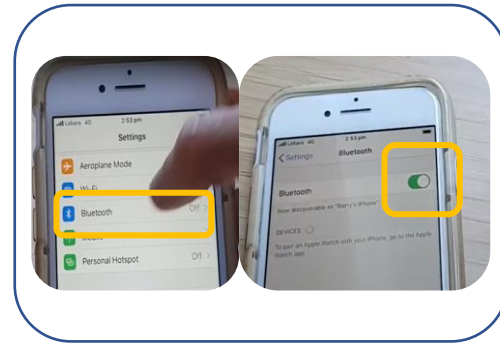


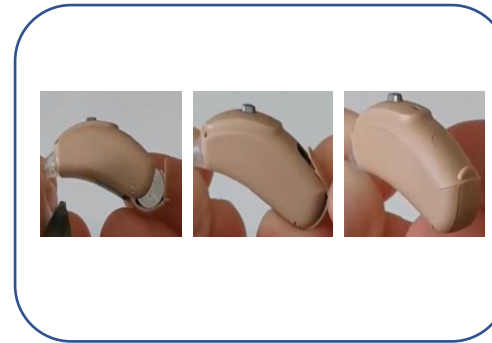
# How to connect Marvel hearing aids to Bluetooth



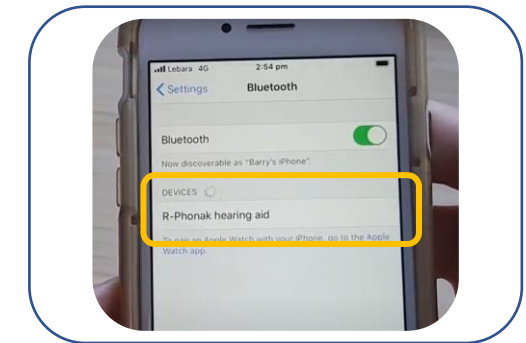
On your phone or tablet click on the settings icon. The icon looks like this depending on if it is an android or iso device



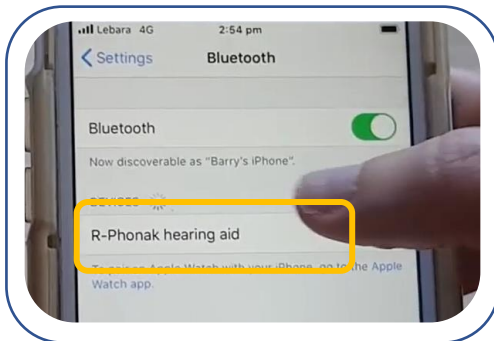
In settings click on the Bluetooth icon. And make sure it is switched on.



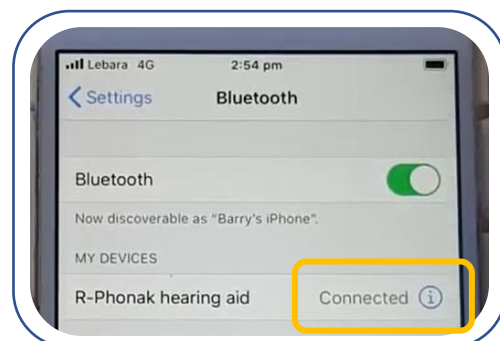
Switch your hearing aid off and on again by opening and closing the battery door.



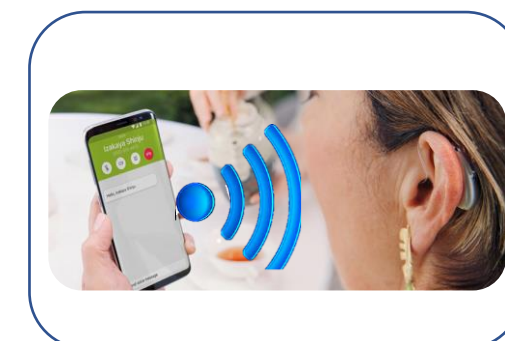
It will only find one of your hearing aids but will pair to both aids.



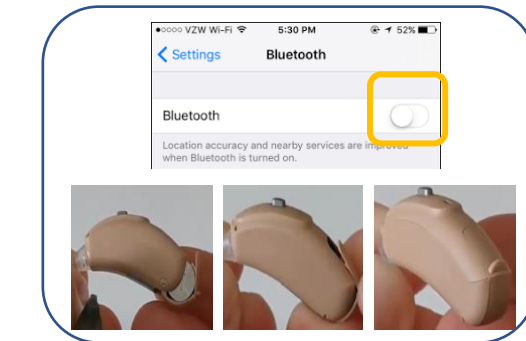
Click on the name of your hearing aid



It will say connected. Your hearing aids are now ready to be used with the device.



You should now be able to listen to your device through-both hearing aids. If not, have another go.



When you're finished, turn off the Bluetooth on your device. Turn your aids off and back on again so they go back to your normal program.