

# North East Lincolnshire

## Special Educational Needs and Disabilities

### Young People's Advisory Group



## What is it?

This is a group for young people aged 12 - 16 with additional needs who would like to help shape the services for young people with SEND in our local area.

## What do they do?

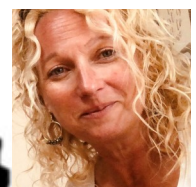
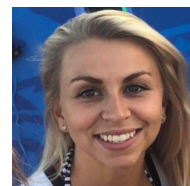
- Meet once a month on a Friday from 11am to 12:30pm at The Taphouse Cleethorpes' function room.
  - Pizza, burgers, salad and soft drinks are provided.
- Play games and quizzes with other young people with additional needs
  - Give their views on topics such as:
    - ⇒ How can we make school life better for young people with SEND?
    - ⇒ What different courses would you like to be available when you leave school?
    - ⇒ What activities would you like to have your local area?
    - ⇒ What can we do to make it easier and safer for young people to travel about in North East Lincolnshire?

## Who will be there?

12 young people from 6 different schools with the SENCO or a teaching Assistant from their school, Lauren and Clare from the local authority SEND Team and the Taphouse staff.

[SEN@nelincs.gov.uk](mailto:SEN@nelincs.gov.uk)

TEL: 07974082474



**North East Lincolnshire**

**Special Educational Needs and Disabilities**

**Young People's Advisory Group**



**Do I have to write?**

No. We are interested in your thoughts, opinions and ideas and we can write this down.

**Do I have to talk in front of other people?**

It's great if you do feel confident enough to talk in the group and give your views but nobody will ask you to stand up and speak or pick you out for a question. If you feel like joining in that's brilliant, if you are having a quiet week that's OK too.

Don't forget your teacher or Teaching assistant will be there.

**What about Covid?**

We will be meeting online on Friday 30th April and Friday 14th May virtually via Teams. After that we will meet once a month at a separate room in the Taphouse in Cleethorpes. We will social distance, wear masks if you want to and wash our hands. Everyone who goes will also take a lateral flow test before.

**What if I don't like the food?**

You can choose what you would like to eat and drink and tell us what you would like. It's totally up to you.

**What if I change my mind about being in the group?**

Thanks fine. Just let your teacher or teaching assistant know.

